

146.55+- acres planted pines – Jefferson County, Georgia

\$329,000 (\$2245/acre)



- Walden Road off Georgia Hwy 171 (Grange Road); 14 miles northwest of Louisville, 45 miles southwest of Augusta's Bobby Jones Expressway
- All wooded, planted pines 29+- years old, thinned
- Good road system
- Pine timber investment with hunting/recreation
- Priced at \$329,000 (\$2245/acre)
- Latitude, Longitude: 33.079291, -82.597866
- Preview at www.GeorgiaLand.com

Shivers
REAL ESTATE
GeorgiaLand.com

Chad Shivers (Cell): 706-833-9114

Email: shivers@georgialand.com

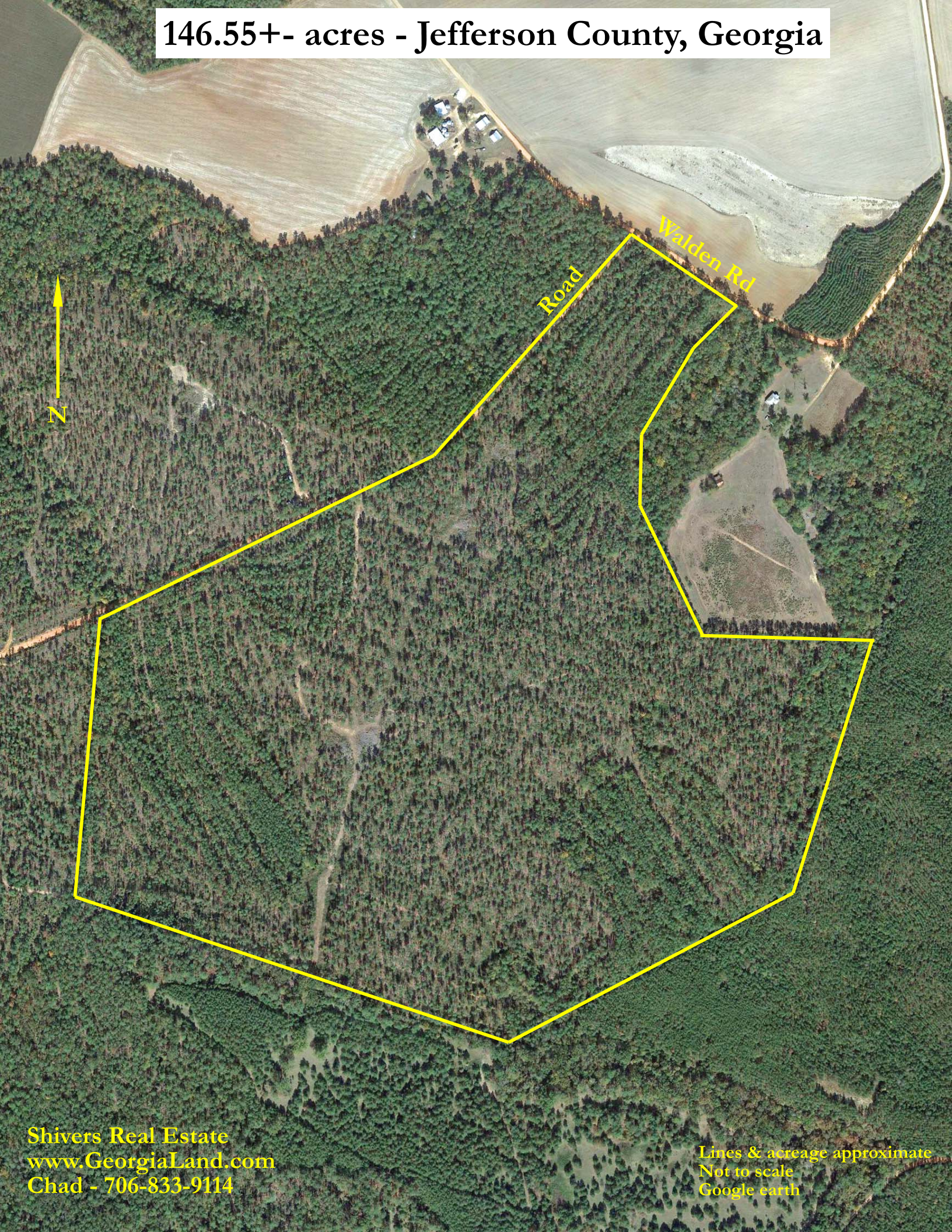
Website: www.GeorgiaLand.com

P.O. Box 849

316 South Liberty Street

Waynesboro, GA 30830

146.55+- acres - Jefferson County, Georgia



Shivers Real Estate
www.GeorgiaLand.com
Chad - 706-833-9114

Lines & acreage approximate
Not to scale
Google earth