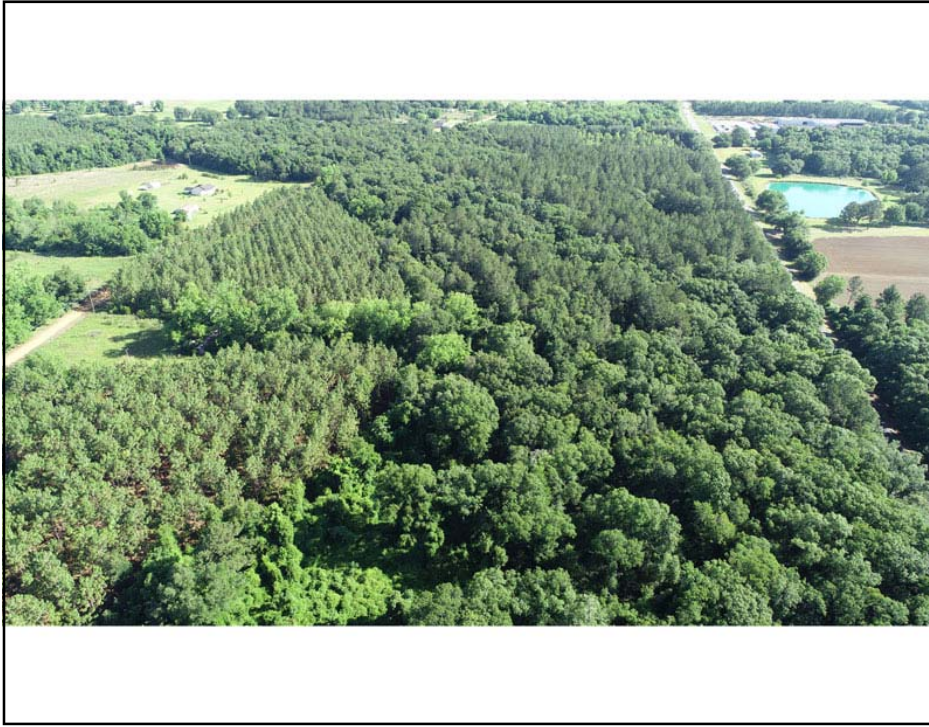


47 acres planted pines, hardwood—Mitchell County, Georgia

\$117,700 (\$2500/acre)



- Georgia Hwy 112 and Research Road, 3 miles south of Camilla, 8 miles northwest of Pelham
- 12 acres mature planted loblolly pines
- 11 acres 20+- year old planted longleaf pines
- 23 acres older hardwood/pine mix
- Half acre wet weather pond
- 3 phase power along Research Road
- Long frontage on Georgia Hwy 112 and Research Road
- \$117,700 (\$2500/acre)
- Latitude, Longitude: 31.186519, -84.228403
- Preview at www.GeorgiaLand.com

Shivers
REAL ESTATE
GeorgiaLand.com

Chad Shivers (Cell): 706-833-9114

Email: shivers@georgialand.com

Website: www.GeorgiaLand.com

P.O. Box 849

316 South Liberty Street

Waynesboro, GA 30830

47.08 acres - Mitchell County, Georgia

Research Rd

Ga Hwy 112



Lines & acreage approximate
Not to scale
Google earth

Shivers Real Estate
www.GeorgiaLand.com
Chad - 706-833-9114